

# GeoHeader<sup>®</sup>

**Factory-Built, Prefabricated Infield Extended Header**

*from GHP Systems, Inc.*



The **GeoHeader<sup>®</sup>** from GHP Systems, Inc. is a factory-built, prefabricated infield extended header designed exclusively for the commercial geothermal industry. The latest innovation in geothermal installations, the **GeoHeader** eliminates the hassles of field building, reduces installation time and cost and increases system reliability.

We build the **GeoHeader** based on your project specifications or our recommended designs that yield optimal performance and exceptional reliability.

The **GeoHeader** is constructed of high-density polyethylene (HDPE) pipe and fittings which are heat fused, and inspected by certified pipe joiners with years of custom fabrication experience in a controlled and clean environment.

***The GeoHeader has become the preferred choice for engineers and contractors because it's:***

- **Reliable**—factory heat fused by certified personnel, eliminating the risk of leaks associated with field fabrication.
- **Time saving**—pre-built, reducing installation time and costs by up to half.
- **Convenient**—delivered palletized and shrink wrapped—in coils or straight lengths—ready to fuse to the vertical heat exchanger (u-bends).
- **Economical**—factory-built using a semi-automated manufacturing process.
- **Easy**—precise, prefabricated construction eliminates confusion in the field and ensures proper installation.



1000 32nd Avenue  
Brookings, SD 57006  
888-447-7757

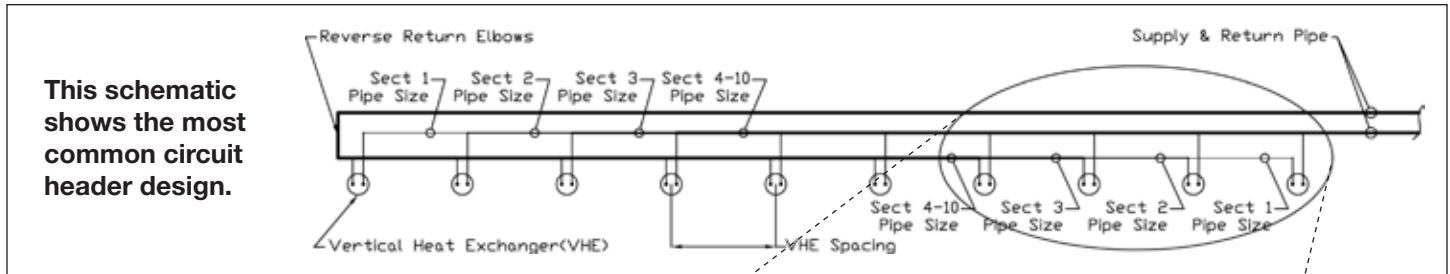
View videos at:  
[www.ghpgeoheader.com](http://www.ghpgeoheader.com)

# The GeoHeader®: Prefabricated, Factory-Built Infield Extended Header

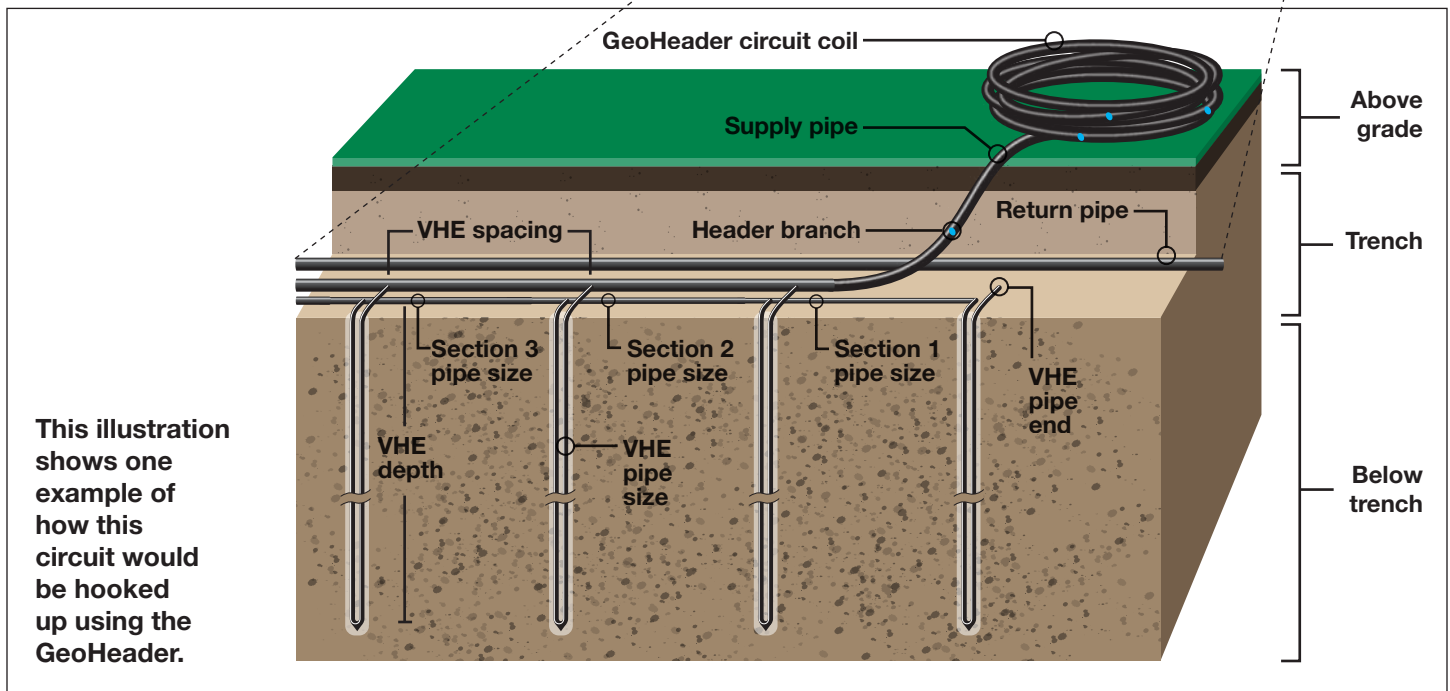
The prefabricated u-bend revolutionized geothermal installations and has become the industry standard for ease and reliability. Now, engineers and contractors are taking advantage of the **GeoHeader**, from GHP Systems, Inc., the next advancement in the commercial geothermal industry.

It's a factory-built, prefabricated infield extended header that saves time, eliminates confusion in the field, and ensures optimal performance for a lifetime of fail-safe service. Here's how it works.

## Typical Circuit Header Design Schematic



## GeoHeader Hook-Up Illustration



In this example, the **GeoHeader** piping is simply rolled out in the trench. All of the required branches (tees) are already in place at the correct spacing and with the required pipe reductions. All that remains is to heat fuse on the vertical heat exchanger (VHE) piping ends to complete the circuit hook-up.

For 2" and smaller portions of a circuit header, the **GeoHeader** comes in a single supply and a single return coil. 3" and larger circuit header pipe sections come in straight lengths (up to 50') with all the required branches at the correct spacing.



View videos at:  
[www.ghpgeoheader.com](http://www.ghpgeoheader.com)

All material © GHP Systems, Inc.

## Compare to Field-Built Headers

### Time Lost “In the Trenches” with Field-Built Headers



Field-built headers require a number of complicated and cumbersome tasks. Consider this typical field-built header installation scenario:

- 1) Acquire and study plans.
- 2) Formulate take-off lists of all the various required pipe and fitting arrangements.
- 3) Order all of the header material and have it shipped to the job site.
- 4) Lay out pipe with the correct pipe size reductions between VHEs according to project engineering plans.
- 5) Cut pipe to the required length accounting for fittings lengths.
- 6) Unpack fittings and correctly lay out all reducing tees, reducing couplers and elbow arrangements to connect pipe sections between VHEs.
- 7) Arrange pipe and fittings in the order to be joined together.
- 8) Heat fuse all supply and return pipe sections to fittings to obtain the designed circuit layout within trench.
- 9) Heat fuse header to VHEs.

These steps are performed within the trench, which often has standing water and debris falling in on the installer.

### GeoHeader® Takes Away the Guesswork



Using the **GeoHeader** reduces or eliminates most tasks with an easy three-step installation and ensures better overall performance:

- **No studying plans, measuring or cutting.** **GeoHeaders** are factory-built in clean, controlled conditions by certified heat fusion fabricators and each fusion is inspected prior to shipment.
- **Eliminates confusion.** Errors with field-built headers can make the complete circuit non-functional. Reduce the chance of error with the pre-manufactured **GeoHeader**.
- **Improves safety for installers.** Safety concerns arise with field-built headers, where more time is spent in the trench constructing the header and many more trips in and out of the trench.
- **Ensures quality heat fusions.** Performing quality fusions in the field is much more difficult due to changing elements and conditions.

In addition, installers tend to rush to keep up with excavators and deadlines. These shortcuts lead to improper fusions and heat fusion inspections. Choose the **GeoHeader** for consistent, quality heat fusions.



Call:  
**888-447-7757**

All material © GHP Systems, Inc.

**GeoHeader®**  
Factory-Built, Prefabricated Infield Extended Header  
from GHP Systems, Inc.

## Ships Securely in Coils or Straight Lengths



### Coils

**GeoHeaders**® with 2" and smaller diameter mains are pre-manufactured in a continuous coil ready to roll out into the trench. These coils are shrink-wrapped and palletized for shipment, so installers can simply remove the wrap and begin their work. (This example is shown on page 2.)



### Straight Lengths

**GeoHeaders** with 3" and larger diameter mains are fabricated and shipped in straight lengths up to 50'.

## Quick and Easy Installation



- Unroll 2" and smaller **GeoHeader**® circuit piping in the header trench at opposite ends of the trench in a reverse return fashion.
- If required, heat fuse 3" and larger straight sections (up to 50' lengths) together and to the 2" and smaller circuit piping.
- To complete the circuit hook-up, heat fuse the vertical heat exchanger (VHE) pipe ends to the corresponding branches of the piping.

**GHP Systems, Inc.** is a leading manufacturer and supplier of commercial geothermal wellfield products and design services located in Brookings, SD. The company offers customers nationwide a comprehensive product line coupled with industry-leading design, materials and quality workmanship for a lifetime of fail-safe service for geothermal wellfield systems. **GHP Systems, Inc.** also manufactures proprietary, trademarked turnkey product solutions including **GeoVault**®, **GeoHeader**® and **GeoManifold**®.



1000 32nd Avenue  
Brookings, SD 57006  
888-447-7757

(605) 697-7869  
(605) 697-9118 fax  
[www.ghpsystems.com](http://www.ghpsystems.com)

View videos at:  
[www.ghpgeoheader.com](http://www.ghpgeoheader.com)